



UNIVERSITA' DEGLI STUDI DI TRENTO - DIPARTIMENTO DI ECONOMIA

SPATIAL MODELS FOR FLOOD RISK ASSESSMENT

**Marco Bee
Roberto Benedetti
Giuseppe Espa**

Discussion Paper No. 10, 2007

The Discussion Paper series provides a means for circulating preliminary research results by staff of or visitors to the Department. Its purpose is to stimulate discussion prior to the publication of papers.

Requests for copies of Discussion Papers and address changes should be sent to:

Dott. Stefano Comino
Dipartimento di Economia
Università degli Studi
Via Inama 5
38100 TRENTO ITALIA

Spatial Models for Flood Risk Assessment

Marco Bee

Department of Economics, University of Trento

Roberto Benedetti

Department of Business, Statistical, Technological and Environmental Sciences

University "G. d'Annunzio" of Chieti-Pescara

Giuseppe Espa

Department of Economics, University of Trento

Abstract. The problem of computing risk measures associated to flood events is extremely important not only from the point of view of civil protection systems but also because of the necessity for the municipalities of insuring against the damages. In this work we propose, in the framework of an integrated strategy, an operating solution which merges in a conditional approach the information usually available in this setup. First we use a Logistic Auto-Logistic (LAM) model for the estimation of the univariate conditional probabilities of flood events. This approach has two fundamental advantages: it allows to incorporate auxiliary information and does not require the target variables to be independent. Then we simulate the joint distribution of floodings by means of the Gibbs Sampler. Finally we propose an algorithm to increase ex post the spatial autocorrelation of the simulated events. The methodology is shown to be effective by means of an application to the estimation of the flood probability of Italian hydrographic regions.

Keywords. Flood Risk, Conditional Approach, LAM Model, Pseudo-Maximum Likelihood Estimation, Spatial Autocorrelation, Gibbs Sampler.

1 Introduction

The last few years have witnessed a growing interest in the estimation of the probability of catastrophic meteorological events; in particular, both

the development of new methods and their application to real data have attracted a lot of attention. Broadly speaking, the reasons can be grouped in at least three groups:

- these events can cause serious damages and put in danger human lives, so that the knowledge of the risk of a certain place, as measured by its probability, can influence decisions (for example, about building houses, roads, dams or other structures) concerning that area;
- municipalities have to insure against the damages, and it is well known that actuarial techniques for the quantification of the premium are mainly based on the probability of occurrence, which determines its frequency, and, possibly, on the severity of the event; see [1] for more details;
- in recent years, the market for the so-called weather derivatives (see, for example, [2]) has become more and more important, and tools for pricing these instruments rely crucially on accurate estimation of the probability of triggering events.

In this paper we focus on the estimation of the risk determined by floodings. Historically, the statistical analysis of this kind of events has mostly been based on Extreme Value Theory (EVT), which studies the distribution of the largest observations of a population and has been frequently applied to hydrological problems: a classical example is the analysis of the “River Nidd data” ([3]; [4], pag. 284). However, EVT suffers of at least two drawbacks. First, it is mainly restricted to univariate settings; second, it does not allow to include additional information contained in auxiliary variables. As a consequence, it is particularly well suited when the investigator is interested in assessing the probability of the event in a single place and does not have any information possibly correlated with the event. It is worth adding that [4], pag. 319-20, present an example concerning a portfolio of water-damage insurance where EVT is not the most appropriate tool, because data is not heavy-tailed.

The goal of the analysis performed here and the features of the data at hand give precise indications about the model to be used. Consider indeed

that we look at the problem from a multivariate point of view, i.e. we want to estimate the probability of flood events affecting jointly all the areas under investigation. This actually follows from the nature of the problem, as it is clear that if an event takes place in a region, it is likely to impact neighboring regions as well; in other words, the events are spatially dependent. The second aim consists in estimating the flood probability as a function of explanatory variables, because flood events can be related to a number of factors as, for example, precipitation over a specified time horizon, geographical position, altitude etc. Thus, we have to build a model where auxiliary variables can be taken into account. For the reasons mentioned above, these two requirements essentially rule out EVT.

The data typically consists of indicator variables for the presence of flood events in each area: more precisely, for each region we have a vector of indicators where the i -th element takes value 1 if a flood took place at the i -th date and value 0 otherwise. Moreover, the values of several explanatory variables, to be described in detail in the next section, are known for each region.

Considering that the indicator variable of the flood events is binary and that the model should include auxiliary variables, it seems natural to resort to a logistic regression model; however, classical logistic models require the target variables to be independent, an hypothesis which is clearly not satisfied by the data at hand. For this reason, standard logistic regression is not appropriate in the present work.

It is thus necessary to introduce some modifications in order to be able to take care of the effects of the spatial dependence of georeferenced data. More specifically, spatial dependence can be “embedded” in the logistic approach by means of a “conditional specification” model of spatial correlation: the fact that an event is observed in a certain place of the geographic space depends on what happens in the adjacent regions.

A model is said to be of a conditional specification type if the joint distribution function of the units is built on the basis of the univariate conditional distributions. The choice of this strategy naturally follows from the fact that these univariate conditional distributions are often simpler to work with than the multidimensional distribution; the latter, in such a setup,

can indeed only be studied numerically.

Among the conditional specification models the auto-logistic approach proposed by Besag ([5], [6]) was at first deemed to be the best solution in consideration of the first requirement above. Unfortunately this model defines a structure of spatial dependence but does not allow to incorporate auxiliary variables. In other words with the auto-logistic approach the a priori information concerning the matter under study cannot be used for estimation, whereas the classical logistic approach explicitly considers the covariates but neglects the effects of spatial dependence. As pointed out by [7], in applications both approaches (logistic and auto-logistic) can be incomplete and not appropriate for modeling spatial data. Therefore it looks reasonable to use a model which takes advantage of the features of both approaches; the logical choice seems to be the so-called Logistic Auto-Logistic model. After estimating this model, it is straightforward to implement the Gibbs Sampling algorithm to simulate the joint distribution.

Finally, given that the spatial autocorrelation estimated with the procedure outlined above is rather small, we develop an algorithm which increases the autocorrelation without modifying the frequency distribution of the flood events.

The structure of the paper is as follows. In section 2 we describe the data and give the details of the model; section 3 analyzes the estimation and simulation techniques, focusing on the pseudo-MLE procedure and on the Gibbs Sampler; section 4 applies the tools to the prediction of floods in some Italian hydrographic regions; in section 5 we move towards risk assessment, trying to introduce a measure of the severity of flood events. Section 6 concludes and gives some directions for future research.

2 The data and the model

2.1 The data

As anticipated in the introduction, the data consists of historical information about flood events and of auxiliary variables for a partition of the Italian territory. The hydrographic areas considered here, which can be seen in

figure 2 (section 4) correspond to a partition similar to the administrative partition in regions: in some cases they coincide (it is, for example, the case of Sardegna and Trentino Alto Adige), in other cases administrative regions are smaller or larger: for example, Sicilia is divided in three areas, whereas there is a single area covering Friuli Venezia Giulia and Veneto. We consider 27 hydrographic areas, so that, on average, they are slightly smaller than administrative regions, which are 20.

In general, the data can be grouped into four categories.

- (i) A spatio-temporal dataset consisting of the flood events which took place in the past in areal units designed to this aim (hydrographic units) or in administrative partitions of the territory under consideration. In the majority of cases it can be represented by a binary matrix $\tilde{\mathbf{Y}} = (\tilde{Y}_{ij})$ ($i = 1, \dots, T$, $j = 1, \dots, N$), where T is the number of dates when a flood event hit at least one area and N is the number of areas. Notice that \tilde{Y}_{ij} is just an indicator of presence or absence of a flood event, because quantitative data concerning the severity of flood events are usually not available, not even grouped in severity classes. For notational simplicity, in the following we put $\mathbf{Y} = \text{vec}(\tilde{\mathbf{Y}})$, namely \mathbf{Y} is the $TN \times 1$ vector obtained by stacking the columns of $\tilde{\mathbf{Y}}$, one below the other, with the columns ordered from left to right.
- (ii) A contiguity matrix \mathbf{C} for the areas described above, defining the association structure of the sites. In our setup \mathbf{C} is specified so that the generic element c_{ij} is equal to 1 if the areas i and j are adjacent and 0 otherwise.
- (iii) A cross-sectional (or just sectional) set containing appropriate auxiliary variables \mathbf{X} possibly related to the territory (meteorological variables as the average of the annual maximum rainfall in a one-hour, three-hour etc. time horizon; hydrographic variables as the dimension of the basin located, completely or partially, in a hydrographic unit; topographic variables, etc.);
- (iv) a matrix \mathbf{F} of return time probabilities whose element f_{ij} denotes the probability, for the i -th hydrographic unit, of the j -th class in which

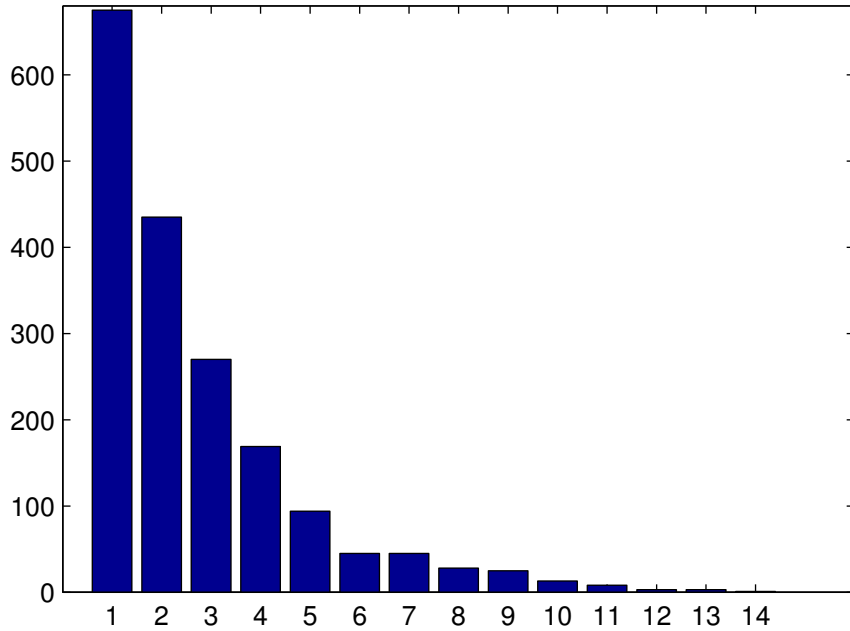


Figure 1: Observed data: number of regions hit by a single event.

the return times were previously grouped.

The data are shown in figure 1. They are a subset of the database of the CNR-GNDICI AVI project, developed by the Italian Research Council; details can be found on the web site of the project (see www.avi.gndci.pg.cnr.it and the references therein). The database contains more than 20000 flood events for the whole Italian territory starting from the XVII century; we decided to limit ourselves to the events of the period January 1900 - January 2002, which are supposed to be more reliable.

As for the auxiliary variables, we have a list containing mostly physical variables:

- area;
- position (geographical coordinates);
- population;
- maximum, minimum and average altitude;
- rainfall in 1, 3, 12 and 24 hours;

- dimension of the basin.

The interpretation of the role played by these variables with respect to flood events is sometimes, but not always, easy (we expect a flood event to be more frequent where it falls more rain and where the altitude is larger; on the other hand, the role of position is less clear); as for the single non-physical variable (population), it is more difficult to predict its impact. In any case, the selection of significant variables is likely to require both statistical tools and “expert opinions”.

2.2 The Logistic Auto-Logistic (LAM) model

The specification of the model has to take into account the features listed above and, in particular, the facts that Y_i is a binary variable and that we are interested in estimating the impact of auxiliary variables on the probability of an event. In order to satisfy both requirements, we adopt a further extension of the standard logistic framework, namely the so-called Logistic Auto-Logistic (LAM) model ([8], pag. 125-126; see [9] for a more general treatment of auto-models). Before giving a formal definition of the model, we need two definitions.

Definition 1 (*Neighborhood criterion*). *A site j is called neighbor of site i if the distribution of Y_i , conditionally on the values of Y in all the other sites, depends on Y_j .*

Definition 2 (*Neighborhood set*). *The set $C\{i\} = \{j : j \text{ is a neighbor of } i\}$ ($j = 1, \dots, N$) is called neighbors set of i .*

Notice that, from a theoretical point of view, the neighborhood criterion is not necessarily related to geographical adjacency, but is defined by a known matrix \mathbf{C} (the *connectivity matrix*) which identifies the areas belonging to $C\{i\}$ (this is sometimes called *contiguity-based neighborhood*); roughly speaking, what happens in the areas not belonging to $C\{i\}$ does not have any influence on the conditional probability of success.

The model can now be formalized writing down explicitly the conditional probability of “success” in area i :

$$P(Y_i = 1 | Y_j, j \neq i, j \in C\{i\}) = \frac{\exp\{\boldsymbol{\alpha} + \boldsymbol{\gamma}'\mathbf{x}_i + \beta \sum_{j \in C\{i\}} y_j\}}{1 + \exp\{\boldsymbol{\alpha} + \boldsymbol{\gamma}'\mathbf{x}_i + \beta \sum_{j \in C\{i\}} y_j\}}. \quad (1)$$

At first glance, model (1) may seem similar to the standard logit model, but from the probabilistic point of view the differences are remarkable.

First, the observations Y_i are dependent, because of the presence of the term $\sum_{j \in C\{i\}} y_j$ in the score function, which implies that the probability of observing a success in region i is influenced by the number of successes in contiguous regions. Second, the vector \mathbf{x}_i contains the auxiliary variables of the i -th area, and $\boldsymbol{\alpha}$, $\boldsymbol{\gamma}$ and β are the unknown parameters to be estimated. Formulation (1) and, in particular, the dependence of the Y_i 's, has a relevant impact on estimation: as we will see in the next section, classical Maximum Likelihood Estimation (MLE) is not feasible, and the most convenient solution consists in using Pseudo Maximum Likelihood Estimation (PMLE), which provides us with estimators which share most of the well known properties of MLE's and allows to avoid the problems of standard MLE in this setup.

The probabilistic model underlying (1) is a *spatial random process* or a *random field*. Referring to [8], chap. 2, for details, we limit ourselves to recall that a random field is an extension of the well known concept of random process: while the latter describes the stochastic evolution over time of a single variable, the random field gives the same information for a family of random vectors. It represents the natural model for our framework, because \mathbf{Y} is a binary vector evolving over time.

So far, we have only specified the conditional distribution of Y_i given Y_j ($j \neq i$). From the theoretical point of view, this introduces a major problem: is it possible to define a functional form for the conditional distribution of each random variable and then derive the joint distribution of the N random variables? In other words, do the univariate conditional distributions contain enough information to fully characterize the joint distribution? The answer to this question is positive under the so-called *positivity condition*, which requires all the marginal distributions of \mathbf{Y} to be strictly positive. This

result was proved by Hammersley and Clifford ([10]) in a famous theorem which circulated for some years in a private form and was subsequently published by other authors ([6], [11], [12]).

Theorem 1 (*Hammersley-Clifford*). *Under the positivity condition, the joint distribution g of \mathbf{Y} satisfies*

$$g(y_1, \dots, y_p) \propto \prod_{j=1}^p \frac{g_{l_j}(y_{l_j} | y_{l_1}, \dots, y_{l_{i-1}}, y'_{l_{i+1}}, \dots, y'_{l_p})}{g_{l_j}(y'_{l_j} | y_{l_1}, \dots, y_{l_{i-1}}, y'_{l_{i+1}}, \dots, y'_{l_p})}$$

for every permutation l on $\{1, 2, \dots, p\}$ and every $y' \in \mathcal{Y}$, where \mathcal{Y} is the sample space of \mathbf{Y} .

Proof: see, for example, [13], sect. 7.1.5.

It is easily verified ([7], sect. 2.4.2.4) that both the autologistic model and the LAM model satisfy the positivity condition, so that the Hammersley-Clifford theorem holds in our setup and we can safely estimate the conditional distributions and use them to simulate the model.

In applications, model (1) is certainly useful in a conditional setup, in the sense that it gives an estimate of the probability of a flood event in the i -th region given that we know what has happened in the neighboring regions. However, this is usually only part of the information needed for practical purposes: both insurance companies and civil protection plans are indeed mostly interested in an “overall” probability of observing a flood event in a certain region, not dependent on the presence of the event in neighboring regions. This unconditional probability can be interpreted as the average riskiness of a region if we ignore what has happened elsewhere: it follows that it is clearly the most important one in the long run, because it can also be thought of as the average riskiness, in the sense that it corresponds to the average of the conditional probabilities as the conditioning events change over time. The latter probability is obviously the risk measure of interest for insurance companies.

It is worth noting that a similar interpretation of risk is common to other fields: in particular, credit risk measurement is interested in both conditional default probabilities (for short run analysis) and unconditional

default probabilities, which give an average riskiness over a longer time horizon.

2.3 The unconditional distribution

The Hammersley-Clifford theorem guarantees the existence and uniqueness of the joint distribution of the Y_i 's, but it does not give its exact form, and the normalizing constant needed to identify it may be very difficult to compute. As a consequence, finding analytically the unconditional joint distribution of \mathbf{Y} is often impossible. To see where the problem comes from in the autologistic model, consider the following well known example ([14], pag. 323; [8], pag. 52-55).

Example 1 (*Ising model*). From the statistical point of view, the Ising model of statistical mechanics is a particular version of the autologistic model. The setup is as follows. A binary variable Y_{ij} is defined on a rectangular array; two sites (i, j) and (k, s) are neighbors if either $i = k$ and $|j - s| = 1$ or $j = s$ and $|i - k| = 1$. Let $S = \sum \sum y_{ij}$ be the total number of successes and n_{ij} the sum of y_{ks} over the four neighboring sites of (i, j) . Let finally $N = (1/2) \sum \sum n_{ij}$. In the Ising model the probability of a realization \mathbf{y} of the random field is given by

$$P(\mathbf{y}) = \frac{1}{Z(\alpha, \beta)} \exp \{ \alpha S + \beta N \}. \quad (2)$$

The normalizing constant $Z(\alpha, \beta)$ is such that $\sum \sum P(Y_{ij}) = 1$; in other words, it has to be introduced in order to make (2) a probability distribution. Unfortunately, this quantity is computationally intractable, so that the joint distribution cannot be determined.

On the other hand, the conditional probabilities of Y_{ij} given all the other y 's take a simple form:

$$P(Y_{ij} = 1 | \text{all other } y\text{'s}) = \frac{\exp \{ \alpha + \beta n_{ij} \}}{1 + \exp \{ \alpha + \beta n_{ij} \}}.$$

■

Although the Hammersley-Clifford theorem is not useful for the computation of the joint distribution, it guarantees its existence, giving a sound

foundation to the common practice of using the conditional probabilities in applications. In the following we will indeed see that estimation can be performed by means of (1) and that the joint distribution can be obtained numerically, via the Gibbs Sampling algorithm, using again the conditional distributions (1).

3 Estimation and simulation: a MCMC Approach

In the preceding section we have recalled that the Hammersley-Clifford theorem does not allow to find exactly the joint distribution of the random field \mathbf{Y} . For estimation purposes, this is a serious problem.

Example 1 (continued). We pointed out in the preceding section that the normalization constant $Z(\alpha, \beta)$ is not computable; moreover, it depends on the unknown parameters α and β , so that we cannot drop it when we write down the likelihood function. The conclusion is that standard MLE of α and β cannot be performed if we start from the joint distribution (2).

3.1 Maximum Pseudo-Likelihood Estimation

The conditional distributions in the autologistic model take a very simple form because, if we consider the joint distribution and apply the definition to find the conditional distributions, the normalization constant drops down (see [15]). This feature, combined with the difficulties associated to standard MLE, led researchers to develop an estimation theory based on the conditional distributions.

In particular, Besag ([17], [18]) was the first to introduce a methodology called Pseudo-Maximum Likelihood Estimation (PMLE). The basic idea is simple: according to classical MLE, if the observations are dependent we cannot compute the likelihood function for all the variables by simply taking the product of the conditional distributions of each observations given all the other observations. To apply PMLE, we ignore this problem and compute the function

$$PL = \prod P(y_i | \text{all other } y_j\text{'s}) \quad (3)$$

as if the observations were conditionally independent. Of course (3) is not a likelihood function, and for this reason it is called *Pseudo-Maximum Likelihood*.

Given that one of the main hypotheses of maximum likelihood estimation is violated, we expect that the properties of MLE's do not extend to this setup, but fortunately most of these properties continue to hold true. In particular, under standard regularity conditions, [19] have shown that PMLE's are consistent and asymptotically normal, with asymptotic variances given by quantities whose interpretation is similar to the elements of the inverse of the Fisher information matrix in classical MLE (see, for example, [20], sect. 9.2).

Essentially, as pointed out by [14], the only property not inherited by PMLE's is efficiency. However, inefficiency is usually small, and compensated by huge computational advantages; using Cressie's words ([9], pag. 461), the pseudo-maximum likelihood procedures "trade away efficiency in exchange for closed-form expressions that avoid working with the exact likelihood's unwieldy normalizing constant". In our setup, the application of PMLE to (1) is straightforward: we employ standard maximum likelihood techniques for the estimation of the parameters of the logit model.

3.2 The simulation of the joint distribution

Having estimated the parameters of (1) by means of PML techniques, the next step consists in finding the joint distribution of the Y_i 's. This problem cannot be solved analytically, so that we have to resort to simulation techniques. Considering that we know the univariate conditional probability distributions, it is natural to use the Gibbs sampling algorithm for the determination of the joint distribution.

The Gibbs sampler ([21]; see [13] for a general treatment and [22] for a more application-oriented analysis) is an algorithm which allows to simulate the joint distribution of p random variables using only the p univariate conditional distributions.

Definition 3 (*Gibbs Sampler*). *Let $\mathbf{Y} = (Y_1, \dots, Y_p)'$ be a p -variate random vector; suppose we can simulate from the p corresponding univariate*

conditional densities f_i , namely

$$Y_i|y_1, y_2, \dots, y_{i-1}, y_{i+1}, \dots, y_p \sim f_i(y_i|y_1, y_2, \dots, y_{i-1}, y_{i+1}, \dots, y_p)$$

for $i = 1, \dots, p$. Then the Gibbs Sampler is given by the following steps: given the values $(y_1^{(t)}, \dots, y_p^{(t)})$ obtained at the t -th iteration, simulate

1. $Y_1^{(t+1)} \sim f_1(y_1|y_2^{(t)}, \dots, y_p^{(t)});$
2. $Y_2^{(t+1)} \sim f_2(y_2|y_1^{(t+1)}, y_3^{(t)}, \dots, y_p^{(t)});$
- \vdots
- p . $Y_p^{(t+1)} \sim f_p(y_p|y_1^{(t+1)}, \dots, y_{p-1}^{(t+1)}).$ ■

The application of the algorithm to our setup is rather straightforward: all we need are the univariate conditional densities, which are given by (1). Thus, the t -th replication of the algorithm consists in simulating p Bernoulli random variables $Y_i^{(t)}$ with parameters $\hat{\pi}_i^{(t)}$ ($i = 1, \dots, p$), where $\hat{\pi}_i^{(t)}$ is given by:

$$\hat{\pi}_i^{(t)} = \frac{\exp\{\hat{\alpha} + \hat{\gamma}'\mathbf{x}_i + \hat{\beta} \sum_{j \in C\{i\}} y_j^{(t-1)}\}}{1 + \exp\{\hat{\alpha} + \hat{\gamma}'\mathbf{x}_i + \hat{\beta} \sum_{j \in C\{i\}} y_j^{(t-1)}\}}.$$

The crucial feature of the algorithm ([13], chap. 7) is that each sequence of random variables generated by the Gibbs Sampler is an ergodic Markov chain whose stationary distribution is the joint distribution of the p variables; nonetheless, this result is of little use for practical purposes, because it does not tell us when convergence is reached. Thus, the last important issue in applications is the determination of a stopping criterion.

Diagnosing convergence has always proved to be a difficult problem. Unfortunately, no general recipe is available, as the convergence behavior of the chain depends on the setting; in other words, it is problem-specific. Referring the reader to [13], chap. 8, for details, here we limit ourselves to mention the classical criterion consisting in simulating B independent chains and discarding the “initial” observations (corresponding to the so-called *burn-in period*) of every chain; if correctly implemented, it is still one of the most reliable criteria. The idea of simulating B independent chains seems to be a sound solution to the problem that adjacent observations of

a single chain are dependent, which implies that, when an *iid* sample is needed, including contiguous observations is incorrect. After simulating B chains, an *iid* sample is obtained by taking the “final” observations of each chain.

4 Application

4.1 Estimation of the conditional distributions

According to section 3.1, the first step of the estimation procedure consists in estimating the parameters α , β and γ in (1) by means of the Pseudo-Maximum Likelihood methodology. This means that we treat the observations as if they were independent and use standard maximum likelihood procedures.

The results are shown in table 1. The auxiliary variables used in the analysis have been obtained by means of a selection procedure performed on a larger set of variables: in particular, the original dataset contained the average rainfall (measured as the average of the yearly maximum rainfall in a given time) for 1, 3, 6, 12, 24 hours, but the only significant one was the 12-hour average.

Table 1. Estimated coefficients, standard errors and t -statistics

Variable	$\hat{\beta}$	se	$t_{\hat{\beta}}$
constant (α)	-4.6600	0.1125	-41.44
Area	0.0001	< 0.0001	40.74
Rainfall in 12 hours	0.0180	0.0016	11.19
spatial correlation (β)	0.0564	0.0084	6.71

As pointed out by [15], we cannot apply standard distributional results, so that the t statistics should only be considered an informal basis for model selection. However, roughly speaking, we believe that in this case they are reliable for at least two reasons:

- the small value of $\hat{\beta}$ implies that the dependence of the Y_i 's is weak, so that the use of standard asymptotic theory should not be completely

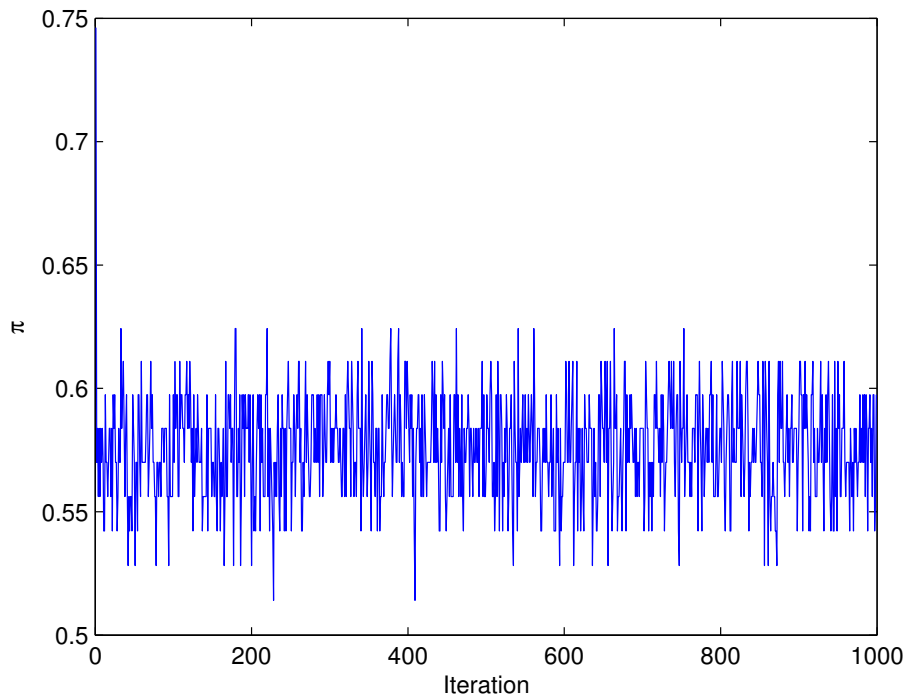


Figure 2: A typical simulated chain.

inappropriate;

- the p -values of the t -statistics are very small, therefore they provide us with a very clear-cut indication about the significance of the variables.

4.2 Simulating the joint distribution

The estimation of the univariate conditional distributions constitutes a necessary step for the implementation of the Gibbs Sampler, because the simulation is based on the univariate conditional distributions with parameters $\hat{\alpha}$, $\hat{\beta}$ and $\hat{\gamma}$. The application of the Gibbs Sampler follows closely definition 3.

As for the issue of diagnosing convergence, monitoring the sequences $\{\hat{\pi}_i^{(j)}\}_{j=1,2,\dots}$ ($i = 1, \dots, N$) we noticed that, for any starting value and for any region, the chain immediately moves in a well defined interval (see figure 2).

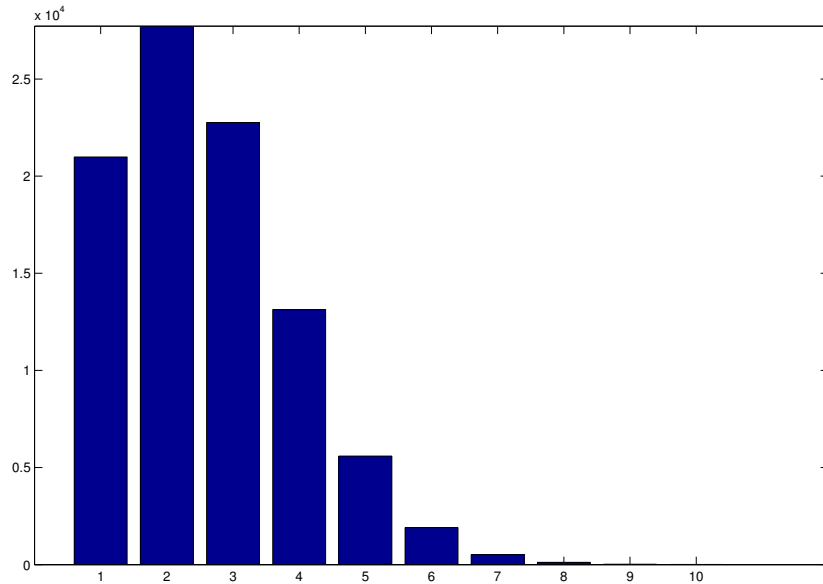


Figure 3: Simulated data: number of regions hit by a single event.

Thus we decided to simulate, for each region, a single chain of length $T = 1000$ and take the average of the last 100 observations $\hat{\pi}_i = (1/100) \sum_{t=901}^{1000} \hat{\pi}_i^{(t)}$ as an estimate of $\pi_i^{(t)}$. The fact that convergence is relatively fast is probably related to the small spatial correlation of the areas under investigation as measured by the numerical value of $\hat{\beta}$.

The final values of the chains obtained in a single replication of the algorithm form an observation from the joint (N -variate) distribution of the Y_i 's. Given the binary nature of the variables of interest, each simulated observation is a vector $\mathbf{y}^* \in \{0, 1\}^N$. Simulating $B = 100,000$ observations and computing $W_k^* = \sum_{i=1}^N y_i^*$ ($k = 1, \dots, N$), we get the distribution shown in figure 3.

The graph gives the frequency distribution of the number of areas hit by a flood event, and can therefore be interpreted as a measure of its spatial extension; this information is clearly important both for civil protection purposes and for insurance companies, because, in absence of a ranking of the severity of floodings, it can be taken as the most basic measure of the gravity of an event.

Estimated values $\hat{\pi}_{GS}$ of π are given in table 2 along with standard errors. For comparison purposes, we also reported the probabilities $\hat{\pi}_{PMLE}$ obtained by means of the univariate logistic regressions estimated in the preceding section.

Table 2. Parameter estimates and standard errors obtained by means of univariate PMLE ($\hat{\pi}_{PMLE}$) and Gibbs Sampler ($\hat{\pi}_{GS}$)

Region	$\hat{\pi}_{pmle}$	$\hat{\pi}_{gs}$	Region	$\hat{\pi}_{pmle}$	$\hat{\pi}_{gs}$
1	0.0571	0.0582 (0.0019)	15	0.0694	0.0703 (0.0019)
2	0.0862	0.0678 (0.0022)	16	0.0692	0.0701 (0.0018)
3	0.0955	0.0835 (0.0026)	17	0.0672	0.0680 (0.0017)
4	0.1705	0.1240 (0.0037)	18	0.0603	0.0611 (0.0016)
5	0.1174	0.1083 (0.0033)	19	0.0871	0.0882 (0.0022)
6	0.0733	0.0748 (0.0024)	20	0.0561	0.0562 (0.0006)
7	0.2613	0.2538 (0.0059)	21	0.0567	0.0568 (0.0006)
8	0.0504	0.0488 (0.0016)	22	0.0580	0.0581 (0.0007)
9	0.2695	0.2510 (0.0056)	23	0.1203	0.1204 (0.0009)
10	0.0651	0.0665 (0.0022)	24	0.0455	0.0456 (0.0004)
11	0.0954	0.0973 (0.0031)	25	0.0775	0.0776 (0.0006)
12	0.0826	0.0841 (0.0025)	26	0.0727	0.0728 (0.0007)
13	0.0520	0.0530 (0.0017)	27	0.2304	0.2337 (0.0057)
14	0.0821	0.0794 (0.0024)			

The differences between the flooding probabilities computed with the two methods are displayed graphically in figure 4.

The map shows that the difference between the univariate and the joint estimates are mostly small; the most relevant exception is given by region 4, for which $\hat{\pi}_{PMLE}$ is significantly larger than $\hat{\pi}_{GS}$. It is difficult to identify the causes of this outcome: we checked the values of the auxiliary variables, and they are similar to the values observed in other regions. Thus, the difference must be related to the spatial autocorrelation between the regions, and this difference underlines the importance of estimating the probability of flood events on the basis of the joint distribution.

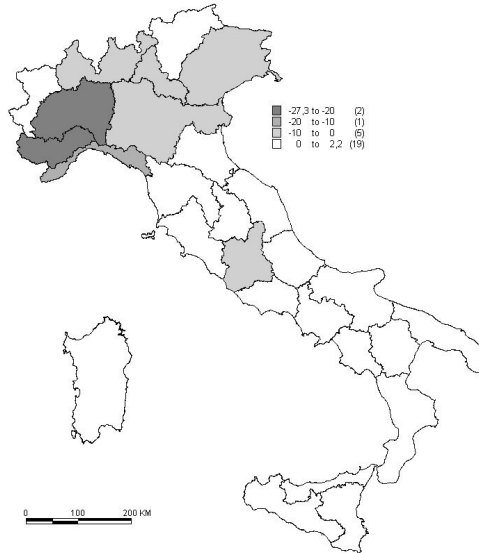


Figure 4: Differences between univariate and joint estimates.

5 Risk Assessment

It is intuitively clear that not all floodings cause the same damages, and this is obviously important. Thus, in order to give a more precise description of the associated risk, we need to introduce some measure of the severity of the events.

In the application at hand, times of return based on expert opinions are available; in Extreme Value Theory, times of return are a common way of describing the severity of events (see [4]), because there is a monotonically increasing function relating the severity of an event to its time of return.

The information available is given in table 3.

Table 3. Times of return in years

Region	5	10	25	30	50	100	200	300	500	Region	5	10	25	30	50	100	200	300	500
1	-	-	-	-	-	-	x	-	x	15	-	-	-	-	x	x	x	-	x
2	-	-	-	-	-	-	x	-	x	16	-	-	-	-	x	x	x	-	-
3	-	-	-	x	x	-	x	-	x	17	-	-	-	x	-	x	x	x	-
4	-	-	-	-	-	-	x	-	x	18	-	-	-	x	x	x	x	x	-
5	-	-	-	-	-	-	x	-	x	19	-	-	-	x	x	x	x	-	x
6	-	-	-	x	x	x	x	-	x	20	-	-	-	x	-	x	-	x	x
7	-	-	-	x	x	x	x	-	x	21	-	-	-	x	-	-	x	-	x
8	-	-	-	x	x	x	x	-	x	22	-	-	-	-	x	-	x	-	x
9	-	-	-	-	x	x	x	-	x	23	-	-	-	-	x	-	x	-	x
10	x	x	x	x	x	-	x	-	x	24	-	-	-	-	x	-	x	-	x
11	-	-	-	x	x	x	x	-	x	25	-	-	-	-	x	-	x	-	x
12	-	-	-	x	x	x	x	-	x	26	-	-	-	-	x	-	x	-	x
13	-	-	-	-	x	x	x	-	x	27	-	-	-	-	x	x	x	-	x
14	-	-	-	-	x	x	x	-	x										

Unfortunately, we do not have any probabilistic measure about the times of return, whose interpretation is as follows: the symbol \times in the table means that the flood event affecting that region has the time of return corresponding to the column. For example, floodings which impact region 1 have a time of return equal to either 200 or 500 years. The only way of associating a probability to the symbols in the table consists in introducing the following two assumptions:

- (i) the severity of events is a linear function of the times of return and is labelled from 1 (lightest event, corresponding to a 5 years time of return) to 9 (strongest event, corresponding to a 500 years time of return).
- (ii) as a “light” event is supposed to occur more frequently than a “strong” event, the probability of a certain time of return is negatively related to its severity. In particular, we decided to compute the probability of the j -th time of return for the i -th region as follows:

$$q_{ij} = \begin{cases} 1/t_j & \text{if the } j\text{-th time of return occurs in the } i\text{-th area,} \\ 0 & \text{else,} \end{cases}$$

where t_j is the j -th time of return. Obviously, we then have to normalize these probabilities so that their sum is equal to one; after normalization, we call these probabilities p_{ij} . As an example, probabilities of times of return for area 10 are given in table 4.

Table 4. Probabilities of times of return for region 10

Time of return	probability
5	0.2
10	0.1
25	0.04
30	0.03
50	0.02
100	0
200	0.005
300	0
500	0.002

The simulation then proceeds according to the probabilities of the times of return p_{ij} . Defining S_i to be a discrete random variable taking values in $\{1, \dots, 9\}$ with probabilities p_{i1}, \dots, p_{i9} , for each region we perform the following steps:

1. find the flood events (i.e., find the values $y_{ij}^* = 1, j = 1, \dots, B$) in the simulated vectors $\mathbf{y}_1^*, \dots, \mathbf{y}_B^*$;
2. for each $y_{ij}^* = 1$, simulate a random number s_i^* from the discrete distribution of S_i and substitute s_i^* to y_{ij}^* .

The new vector \mathbf{y}_j^* is such that the frequency of flood events is the same as in the first part of the simulation, but now the events have different severities, according to the estimated times of return. As an example, figure 5 shows the distribution of the severities of the events simulated for area 10.

5.1 Introducing spatial autocorrelation

From section 4 (see table 1) we know that the estimated numerical value of the autocorrelation parameter β is rather small, so that the autocorrelation of the events simulated from the joint distribution is small as well. The value of $\hat{\beta}$ is undoubtedly related to the specification of the contiguity matrix \mathbf{C} : in particular, such a result is likely to be determined by the fact that \mathbf{C} contains “many” zeros or, in other words, each region has few neighbors. From the practitioners’ point of view, underestimating spatial dependence can be

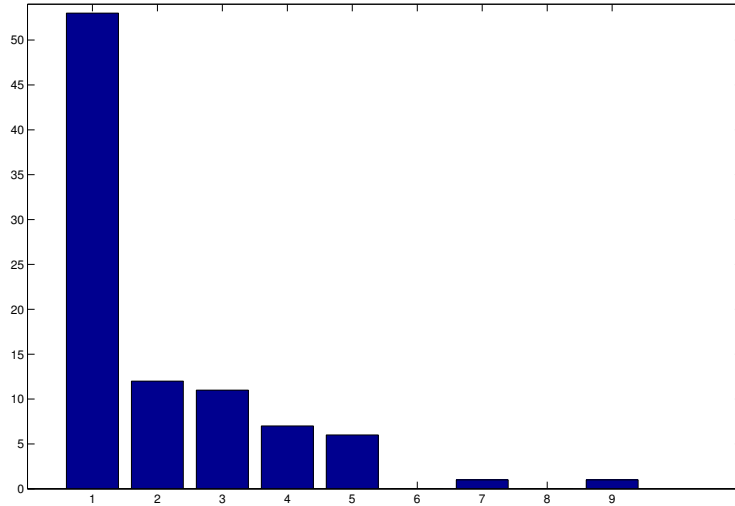


Figure 5: Severity of the simulated events for area 10.

dangerous, as it would imply an underrate of the total risk as measured by means of the joint distribution.

A possible remedy consists in increasing spatial autocorrelation ex post; to this aim, we propose to use an algorithm which “switches” the simulated events in order to increase spatial autocorrelation as measured by the Moran index (see [16] for a thorough description):

$$I = \frac{N}{\sum_i \sum_j c_{ij}} \frac{\sum_i \sum_j c_{ij} (y_i^* - \bar{y}^*) (y_j^* - \bar{y}^*)}{\sum_i (y_i^* - \bar{y}^*)^2}.$$

More precisely, the k -th iteration of the algorithm, which resembles the spin-exchange algorithm ([23]; [24]; [9], pag. 572), is based on the following steps:

- (i) two replications of the simulation (that is, two N -dimensional vectors \mathbf{y}_i^* and \mathbf{y}_j^*) are chosen at random;
- (ii) if at least one component $y_{i_j}^*$ and $y_{s_j}^*$ is non-zero in both vectors and has different severity, sum the values of the Moran index computed on the two replications; call M_1 the value obtained;
- (iii) switch the events $y_{i_j}^*$ and $y_{s_j}^*$ and recompute the Moran index; call M_2 the value obtained;

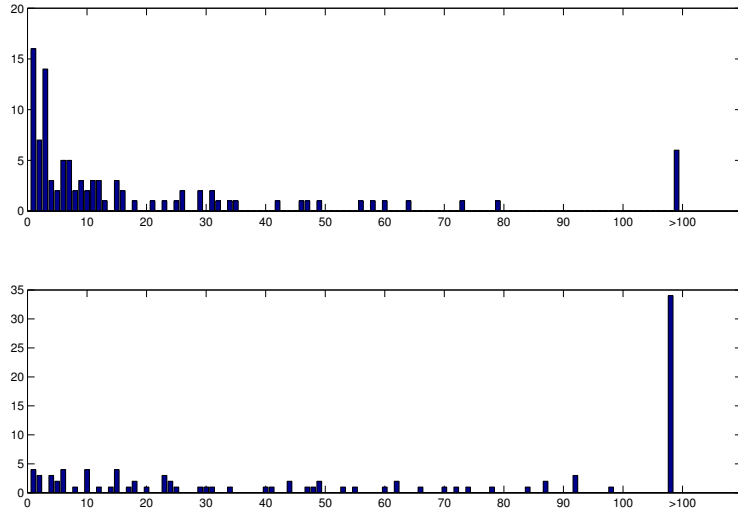


Figure 6: Iterations needed for a 10% (top) and 20% (bottom) increase.

- (iv) if $M_2 > M_1$, start a new iteration; else, undo the switch and go back to step (i).

When should we stop the algorithm? We have to decide a priori the amount of spatial autocorrelation we want to add, and then stop the algorithm at the smallest t such that the quantity $M^{(t)} - M^{(1)}$ is larger than a predefined value ϵ .

To determine the effectiveness of the algorithm, we performed some numerical experiments. We ran it 100 times and kept track of the number of iterations needed to increase the spatial autocorrelation of the simulated events by a percentage of $\epsilon\%$, with values of ϵ equal respectively to 10% and 20%. Figure 6 gives the results.

6 Conclusions

In this paper we have proposed a multivariate model for the estimation and simulation of flood events. The model allows to incorporate two essential requirements: the inclusion of additional information possibly contained in auxiliary variables and the explicit consideration of spatial autocorrelation.

The simulation procedure accounts for the severity of events, according to times of return estimated by means of expert opinions. Although spatial dependence is explicitly considered by the model, it may be appropriate to modify ex post the results in order to get a larger spatial autocorrelation without changing the marginal probability distributions of the events in each area; to this aim, we developed an algorithm, based on a methodology similar to the spin-exchange, for increasing the spatial dependence of the simulated events.

Although this model constitutes an improvement with respect to more standard approaches used in this field, many problems remain open. In particular, we stress the necessity of introducing a more precise estimate of the severity of events, which is strictly related to the availability of more accurate data concerning either the times of return or other auxiliary variables carrying some information about the “magnitude” of observed floodings. Another issue that should be explored more thoroughly concerns the use of the algorithm which increases ex post the spatial autocorrelation of the simulated events: some criterion about the amount of the increase should indeed be established.

References

- [1] Mikosch T. *Non-Life Insurance Mathematics*. Springer: New York, 2004.
- [2] Jewson S, Brix A, Ziehmann C. *Weather Derivative Valuation: The Meteorological, Statistical, Financial and Mathematical Foundations*. Cambridge: Cambridge University Press, 2005.
- [3] Natural Environment Research Council. *Flood Studies Report, 5 Volumes*. Whitefriars Press: London, 1975.
- [4] Embrechts P, Kluppelberg C, Mikosch T. *Modelling Extremal Events for Insurance and Finance*. Springer: New York, 1997.
- [5] Besag J. Nearest-neighbour systems and the auto-logistic model for binary data. *Journal of the Royal Statistical Society B* 1972; **34**: 76-83.

- [6] Besag J. Spatial interaction and the statistical analysis of lattice systems (with discussion). *Journal of the Royal Statistical Society B* 1974; **36**, 192-236.
- [7] Arbia G, Espa G. Forecasting statistical models of archaeological site location. *Archeologia e Calcolatori* 1996; **7**: 365-372.
- [8] Arbia G. *Spatial Econometrics: Statistical Foundations and Applications to regional Convergence*. Springer: New York, 2006.
- [9] Cressie NAC. *Statistics for Spatial Data*, revised edition. Wiley: New York, 1993.
- [10] Hammersley JM, Clifford P. Markov fields on finite graphs lattices. *Unpublished manuscript*, 1971.
- [11] Preston CJ. Generalized Gibbs states and Markov random fields. *Advances in Applied Probability* 1973; **5**: 242-261.
- [12] Grimmett GR. A theorem about random fields, *Bulletin of the London Mathematical Society* 1973; **79**: 5.
- [13] Casella G, Robert CP. *Monte Carlo Statistical Methods*. Springer: New York, 1999.
- [14] Strauss D. The Many Faces of Logistic Regression. *The American Statistician* 1992; **46**: 321-327.
- [15] Strauss D, Ikeda M. Pseudolikelihood estimation for social networks. *Journal of the American Statistical Association* 1990; **85**: 204-212.
- [16] Cliff AD, Ord JK. *Spatial Processes. Models and Applications*. Pion: London, 1981.
- [17] Besag J. Statistical analysis of non-lattice data, *The Statistician* 1975; **24**, 179-195.
- [18] Besag J. Efficiency of pseudo-likelihood estimators for simple Gaussian fields *Biometrika* 1977; **64**, 616-618.

- [19] Arnold BC, Strauss D. Pseudo likelihood estimation: some examples. *Sankhya B* 1991; **53**, 233-243.
- [20] Cox DR, Hinkley DV. *Theoretical Statistics*. Chapman and Hall: London, 1974.
- [21] Geman S, Geman D. Stochastic relaxation, Gibbs distributions, and the Bayesian restoration of images, *IEEE Transactions on Pattern Analysis and Machine Intelligence* 1984; **6**, 721-741.
- [22] Gilks WR, Richardson S, Spiegelhalter DJ. (eds) *Markov Chain Monte Carlo in Practice*. Chapman and Hall: London, 1996.
- [23] Flinn PA. Monte Carlo calculation of phase separation in a two-dimensional Ising system. *Journal of Statistical Physics* 1974; **10**, 89-97.
- [24] Cross GR, Jain AK. Markov random field texture models. *IEEE Transactions on Pattern Analysis and Machine Intelligence* 1983; **PAMI-5**, 25-39.

Elenco dei papers del Dipartimento di Economia

- 2000.1 *A two-sector model of the effects of wage compression on unemployment and industry distribution of employment*, by Luigi Bonatti
- 2000.2 *From Kuwait to Kosovo: What have we learned? Reflections on globalization and peace*, by Roberto Tamborini
- 2000.3 *Metodo e valutazione in economia. Dall'apriorismo a Friedman*, by Matteo Motterlini
- 2000.4 *Under tertiarisation and unemployment*. by Maurizio Pugno
- 2001.1 *Growth and Monetary Rules in a Model with Competitive Labor Markets*, by Luigi Bonatti.
- 2001.2 *Profit Versus Non-Profit Firms in the Service Sector: an Analysis of the Employment and Welfare Implications*, by Luigi Bonatti, Carlo Borzaga and Luigi Mittone.
- 2001.3 *Statistical Economic Approach to Mixed Stock-Flows Dynamic Models in Macroeconomics*, by Bernardo Maggi and Giuseppe Espa.
- 2001.4 *The monetary transmission mechanism in Italy: The credit channel and a missing ring*, by Riccardo Fiorentini and Roberto Tamborini.
- 2001.5 *Vat evasion: an experimental approach*, by Luigi Mittone
- 2001.6 *Decomposability and Modularity of Economic Interactions*, by Luigi Marengo, Corrado Pasquali and Marco Valente.
- 2001.7 *Unbalanced Growth and Women's Homework*, by Maurizio Pugno
- 2002.1 *The Underground Economy and the Underdevelopment Trap*, by Maria Rosaria Carillo and Maurizio Pugno.
- 2002.2 *Interregional Income Redistribution and Convergence in a Model with Perfect Capital Mobility and Unionized Labor Markets*, by Luigi Bonatti.
- 2002.3 *Firms' bankruptcy and turnover in a macroeconomy*, by Marco Bee, Giuseppe Espa and Roberto Tamborini.
- 2002.4 *One "monetary giant" with many "fiscal dwarfs": the efficiency of macroeconomic stabilization policies in the European Monetary Union*, by Roberto Tamborini.
- 2002.5 *The Boom that never was? Latin American Loans in London 1822-1825*, by Giorgio Fodor.

2002.6 *L'economia senza banditore di Axel Leijonhufvud: le 'forze oscure del tempo e dell'ignoranza' e la complessità del coordinamento*, by Elisabetta De Antoni.

2002.7 *Why is Trade between the European Union and the Transition Economies Vertical?*, by Hubert Gabrisch and Maria Luigia Segnana.

2003.1 *The service paradox and endogenous economic growth*, by Maurizio Pugno.

2003.2 *Mappe di probabilità di sito archeologico: un passo avanti*, di Giuseppe Espa, Roberto Benedetti, Anna De Meo e Salvatore Espa.
(*Probability maps of archaeological site location: one step beyond*, by Giuseppe Espa, Roberto Benedetti, Anna De Meo and Salvatore Espa).

2003.3 *The Long Swings in Economic Understanding*, by Axel Leijonhufvud.

2003.4 *Dinamica strutturale e occupazione nei servizi*, di Giulia Felice.

2003.5 *The Desirable Organizational Structure for Evolutionary Firms in Static Landscapes*, by Nicolás Garrido.

2003.6 *The Financial Markets and Wealth Effects on Consumption An Experimental Analysis*, by Matteo Ploner.

2003.7 *Essays on Computable Economics, Methodology and the Philosophy of Science*, by Kumaraswamy Velupillai.

2003.8 *Economics and the Complexity Vision: Chimerical Partners or Elysian Adventurers?*, by Kumaraswamy Velupillai.

2003.9 *Contratto d'area cooperativo contro il rischio sistemico di produzione in agricoltura*, di Luciano Pilati e Vasco Boatto.

2003.10 *Il contratto della docenza universitaria. Un problema multi-tasking*, di Roberto Tamborini.

2004.1 *Razionalità e motivazioni affettive: nuove idee dalla neurobiologia e psichiatria per la teoria economica?* di Maurizio Pugno.
(*Rationality and affective motivations: new ideas from neurobiology and psychiatry for economic theory?* by Maurizio Pugno.

2004.2 *The economic consequences of Mr. G. W. Bush's foreign policy. Can th US afford it?* by Roberto Tamborini

2004.3 *Fighting Poverty as a Worldwide Goal* by Rubens Ricupero

2004.4 *Commodity Prices and Debt Sustainability* by Christopher L. Gilbert and Alexandra Tabova

2004.5 *A Primer on the Tools and Concepts of Computable Economics* by K. Vela Velupillai

2004.6 *The Unreasonable Ineffectiveness of Mathematics in Economics* by Vela K. Velupillai

2004.7 *Hicksian Visions and Vignettes on (Non-Linear) Trade Cycle Theories* by Vela K. Velupillai

2004.8 *Trade, inequality and pro-poor growth: Two perspectives, one message?* By Gabriella Berloffia and Maria Luigia Segnana

2004.9 *Worker involvement in entrepreneurial nonprofit organizations. Toward a new assessment of workers? Perceived satisfaction and fairness* by Carlo Borzaga and Ermanno Tortia.

2004.10 *A Social Contract Account for CSR as Extended Model of Corporate Governance (Part I): Rational Bargaining and Justification* by Lorenzo Sacconi

2004.11 *A Social Contract Account for CSR as Extended Model of Corporate Governance (Part II): Compliance, Reputation and Reciprocity* by Lorenzo Sacconi

2004.12 *A Fuzzy Logic and Default Reasoning Model of Social Norm and Equilibrium Selection in Games under Unforeseen Contingencies* by Lorenzo Sacconi and Stefano Moretti

2004.13 *The Constitution of the Not-For-Profit Organisation: Reciprocal Conformity to Morality* by Gianluca Grimalda and Lorenzo Sacconi

2005.1 *The happiness paradox: a formal explanation from psycho-economics* by Maurizio Pugno

2005.2 *Euro Bonds: in Search of Financial Spillovers* by Stefano Schiavo

2005.3 *On Maximum Likelihood Estimation of Operational Loss Distributions* by Marco Bee

2005.4 *An enclave-led model growth: the structural problem of informality persistence in Latin America* by Mario Cimoli, Annalisa Primi and Maurizio Pugno

2005.5 *A tree-based approach to forming strata in multipurpose business surveys*, Roberto Benedetti, Giuseppe Espa and Giovanni Lafratta.

2005.6 *Price Discovery in the Aluminium Market* by Isabel Figuerola-Ferretti and Christopher L. Gilbert.

2005.7 *How is Futures Trading Affected by the Move to a Computerized Trading System? Lessons from the LIFFE FTSE 100 Contract* by Christopher L. Gilbert and Herbert A. Rijken.

2005.8 *Can We Link Concessional Debt Service to Commodity Prices?* By Christopher L. Gilbert and Alexandra Tabova

2005.9 *On the feasibility and desirability of GDP-indexed concessional lending* by Alexandra Tabova.

2005.10 *Un modello finanziario di breve periodo per il settore statale italiano: l'analisi relativa al contesto pre-unione monetaria* by Bernardo Maggi e Giuseppe Espa.

2005.11 *Why does money matter? A structural analysis of monetary policy, credit and aggregate supply effects in Italy*, Giuliana Passamani and Roberto Tamborini.

2005.12 *Conformity and Reciprocity in the "Exclusion Game": an Experimental Investigation* by Lorenzo Sacconi and Marco Faillo.

2005.13 *The Foundations of Computable General Equilibrium Theory*, by K. Vela Velupillai.

2005.14 *The Impossibility of an Effective Theory of Policy in a Complex Economy*, by K. Vela Velupillai.

2005.15 *Morishima's Nonlinear Model of the Cycle: Simplifications and Generalizations*, by K. Vela Velupillai.

2005.16 *Using and Producing Ideas in Computable Endogenous Growth*, by K. Vela Velupillai.

2005.17 *From Planning to Mature: on the Determinants of Open Source Take Off* by Stefano Comino, Fabio M. Manenti and Maria Laura Parisi.

2005.18 *Capabilities, the self, and well-being: a research in psycho-economics*, by Maurizio Pugno.

2005.19 *Fiscal and monetary policy, unfortunate events, and the SGP arithmetics. Evidence from a growth-gap model*, by Edoardo Gaffeo, Giuliana Passamani and Roberto Tamborini

2005.20 *Semiparametric Evidence on the Long-Run Effects of Inflation on Growth*, by Andrea Vaona and Stefano Schiavo.

2006.1 *On the role of public policies supporting Free/Open Source Software. An European perspective*, by Stefano Comino, Fabio M. Manenti and Alessandro Rossi.

2006.2 *Back to Wicksell? In search of the foundations of practical monetary policy*, by Roberto Tamborini

2006.3 *The uses of the past*, by Axel Leijonhufvud

2006.4 *Worker Satisfaction and Perceived Fairness: Result of a Survey in Public, and Non-profit Organizations*, by Ermanno Tortia

2006.5 *Value Chain Analysis and Market Power in Commodity Processing with Application to the Cocoa and Coffee Sectors*, by Christopher L. Gilbert

2006.6 *Macroeconomic Fluctuations and the Firms' Rate of Growth Distribution: Evidence from UK and US Quoted Companies*, by Emiliano Santoro

2006.7 *Heterogeneity and Learning in Inflation Expectation Formation: An Empirical Assessment*, by Damjan Pfajfar and Emiliano Santoro

2006.8 *Good Law & Economics needs suitable microeconomic models: the case against the application of standard agency models: the case against the application of standard agency models to the professions*, by Lorenzo Sacconi

2006.9 *Monetary policy through the "credit-cost channel". Italy and Germany*, by Giuliana Passamani and Roberto Tamborini

2007.1 *The Asymptotic Loss Distribution in a Fat-Tailed Factor Model of Portfolio Credit Risk*, by Marco Bee

2007.2 *Sraffa's Mathematical Economics – A Constructive Interpretation*, by Kumaraswamy Velupillai

2007.3 *Variations on the Theme of Conning in Mathematical Economics*, by Kumaraswamy Velupillai

2007.4 *Norm Compliance: the Contribution of Behavioral Economics Models*, by Marco Faillo and Lorenzo Sacconi

2007.5 *A class of spatial econometric methods in the empirical analysis of clusters of firms in the space*, by Giuseppe Arbia, Giuseppe Espa e Danny Quah.

2007.6 *Rescuing the LM (and the money market) in a modern Macro course*, by Roberto Tamborini.

2007.7 *Family, Partnerships, and Network: Reflections on the Strategies of the Salvadori Firm of Trento*, by Cinzia Lorandini.

2007.8 *I Verleger serici trentino-tirolesi nei rapporti tra Nord e Sud: un approccio prosopografico*, by Cinzia Lorandini.

2007.9 *A Framework for Cut-off Sampling in Business Survey Design*, by Marco Bee, Roberto Benedetti e Giuseppe Espa

2007.10 *Spatial Models for Flood Risk Assessment*, by Marco Bee, Roberto Benedetti e Giuseppe Espa

PUBBLICAZIONE REGISTRATA PRESSO IL TRIBUNALE DI TRENTO